

- NOTES:**
- DESIGNATION AREA TO BE REDUCED UPON COMPLETION OF WORKS.
- LEGEND**
- MAIN TUNNEL
 - LINK SEWER
 - CSO COLLECTOR
 - CONNECTION PIPELINE
 - VENTILATION DUCTS
 - EXISTING RETICULATION SEWER
 - wc EXISTING TRUNK SEWER
 - sw EXISTING STORMWATER
 - PROPOSED DESIGNATION BOUNDARY
 - LID/STRUCTURE FLUSH WITH GROUND
 - LID/STRUCTURE ABOVE GROUND



Plot Date: 11-Jul-13 11:40 a.m.
 File path: P:\0538 - Central Interceptor\04_Drawings\4.3_Working\AEE_Concent\General\0wg

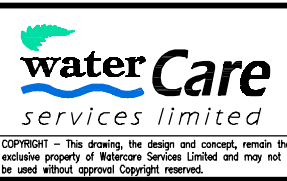
DESIGNED	NL			
DES. CHECKED	JS			
DRAWN	AP			
DWG. CHECKED	NL			
REV'D P.MGR	JS			
APP'D P.DIR	CC			
ISSUE	DATE	AMENDMENT	BY	APPD.
B	12/07/13	OVERFLOW NOTES ADDED	AP	JQC
A	17/08/12	CONSENT ISSUE	AP	PR

OPERATIONS

SITE LAYOUT AND DESIGNS INDICATIVE ONLY AND SUBJECT TO CHANGE DURING DETAILED DESIGN DEVELOPMENT

ASSET MANAGER

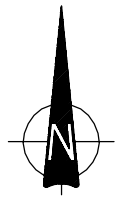
AEE JULY 2013



CENTRAL INTERCEPTOR GENERAL

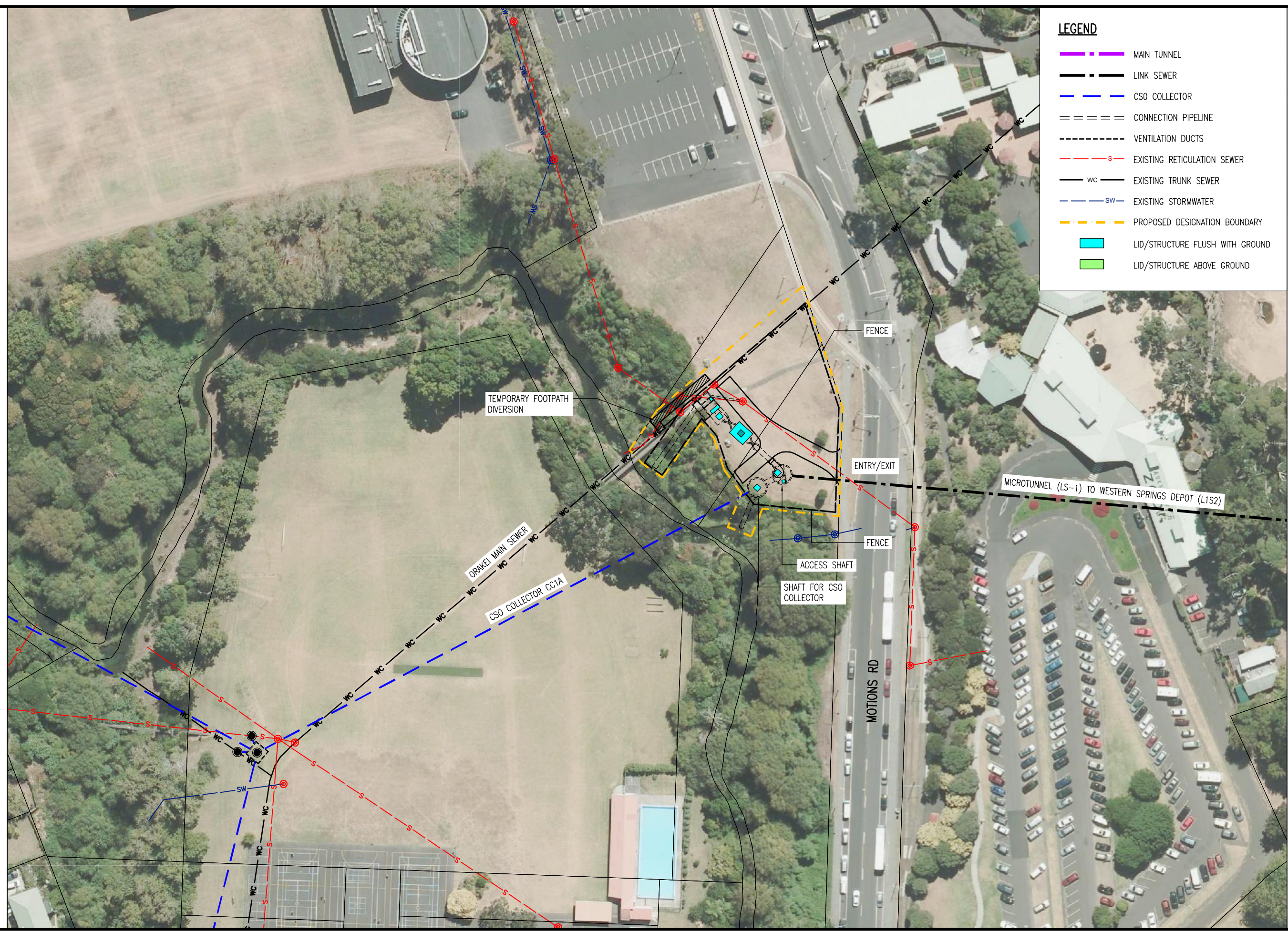
MOTIONS ROAD (L1S1) - PERMANENT WORKS PLAN

CAD FILE AEE-MAIN-11.1_B	DATE 11-Jul-13
ORIGINAL SCALE A1	CONTRACT No. 0538
1:1000 A3	
DRAWING No. AEE-MAIN-11.1	ISSUE B



LEGEND

- — — — — MAIN TUNNEL
- - - - - LINK SEWER
- - - - - CSO COLLECTOR
- = = = = = CONNECTION PIPELINE
- - - - - VENTILATION DUCTS
- - - - - EXISTING RETICULATION SEWER
- — — — — EXISTING TRUNK SEWER
- - - - - EXISTING STORMWATER
- - - - - PROPOSED DESIGNATION BOUNDARY
- LID/STRUCTURE FLUSH WITH GROUND
- LID/STRUCTURE ABOVE GROUND



Plot Date: 10-Aug-12 9:30 AM
 File path: P:\0538 - Central Interceptor\04_Drawings\4.3_Working\AEE_Main_Consept\General.Dwg

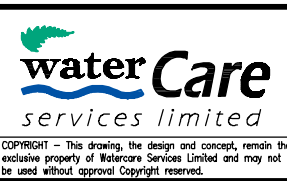
DESIGNED	NL				
DES. CHECKED	JS	<i>[Signature]</i>	08/12		
DRAWN	AP	<i>[Signature]</i>			
DWG. CHECKED	NL	<i>[Signature]</i>	08/12		
REV'D P.MGR	JS				
APP'D P.DIR	CC				
ISSUE	DATE	AMENDMENT	BY	APPD.	BY DATE
A	17/08/12	CONSENT ISSUE	AP	PR	APP'D P.DIR

OPERATIONS

SITE LAYOUT AND DESIGNS INDICATIVE ONLY AND SUBJECT TO CHANGE DURING DETAILED DESIGN DEVELOPMENT

ASSET MANAGER

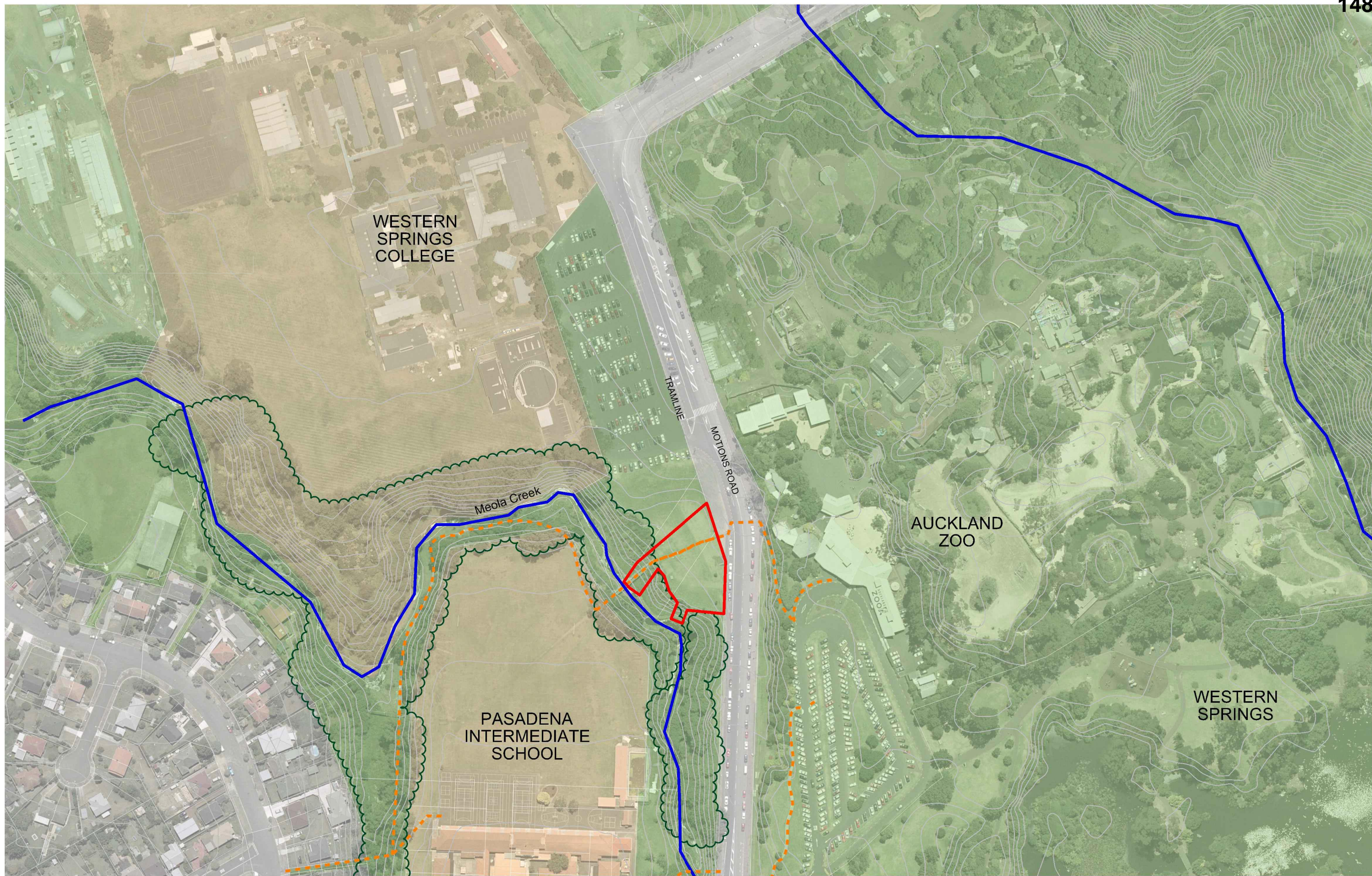
AEE AUGUST 2012



CENTRAL INTERCEPTOR GENERAL

MOTIONS ROAD (L1S1) - CONSTRUCTION WORKS PLAN

CAD FILE AEE-MAIN-11.2	DATE 26-Jul-12
ORIGINAL SCALE A1	CONTRACT No. 0538
1:1000 A3	
DRAWING No. AEE-MAIN-11.2	ISSUE A





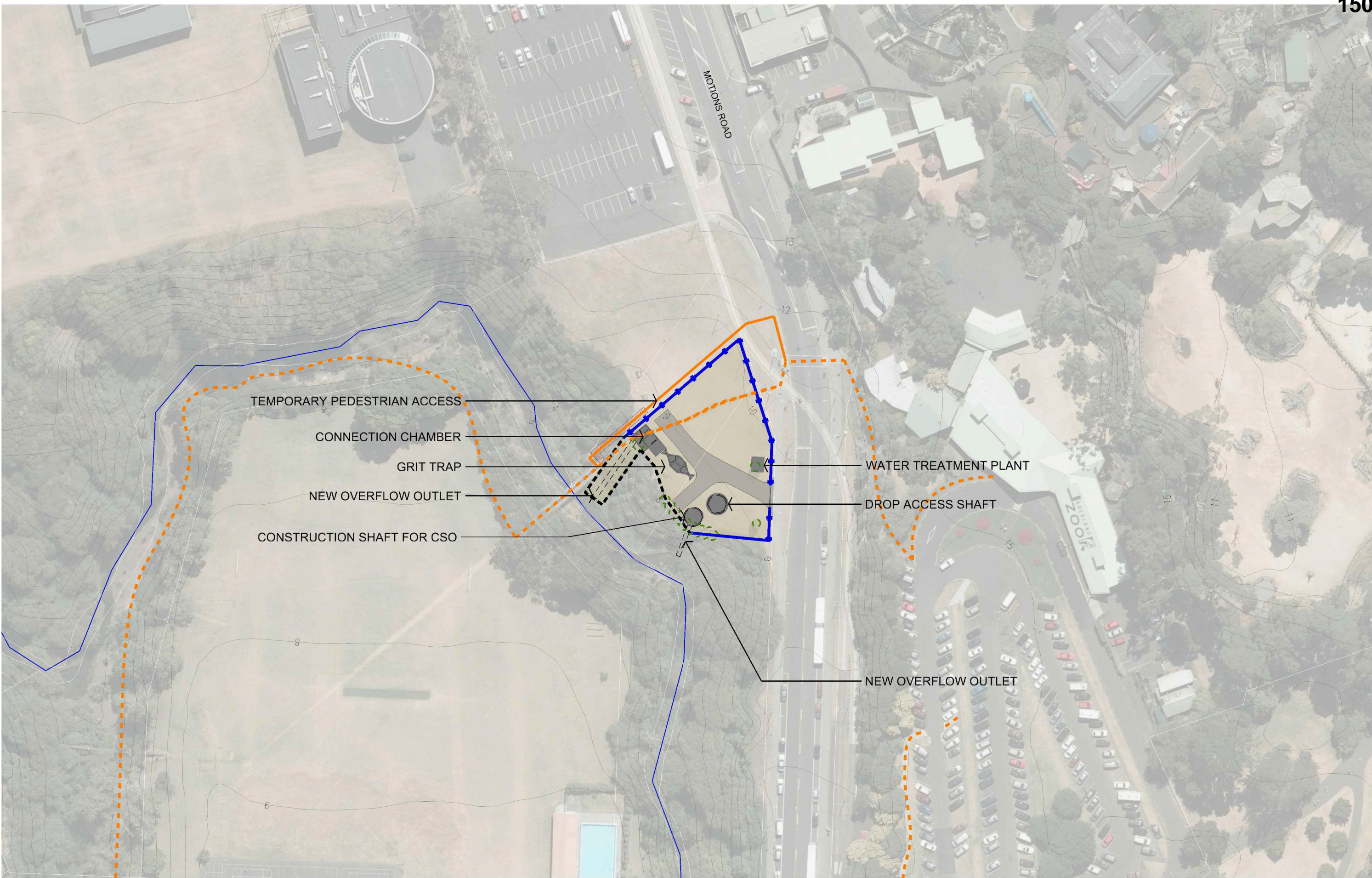
View from Motions Road looking West



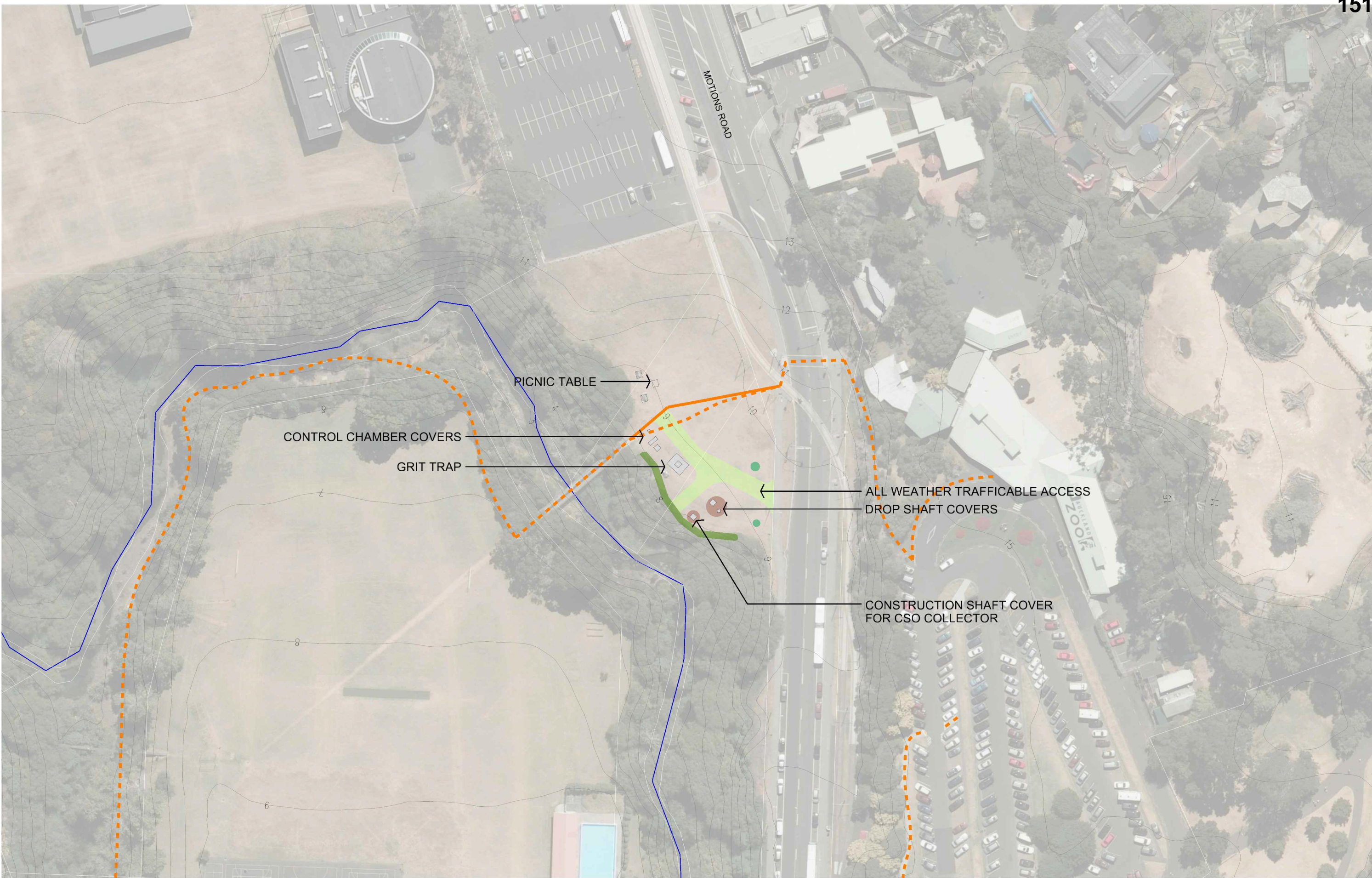
View from Pedestrian Bridge



View from Pedestrian Bridge

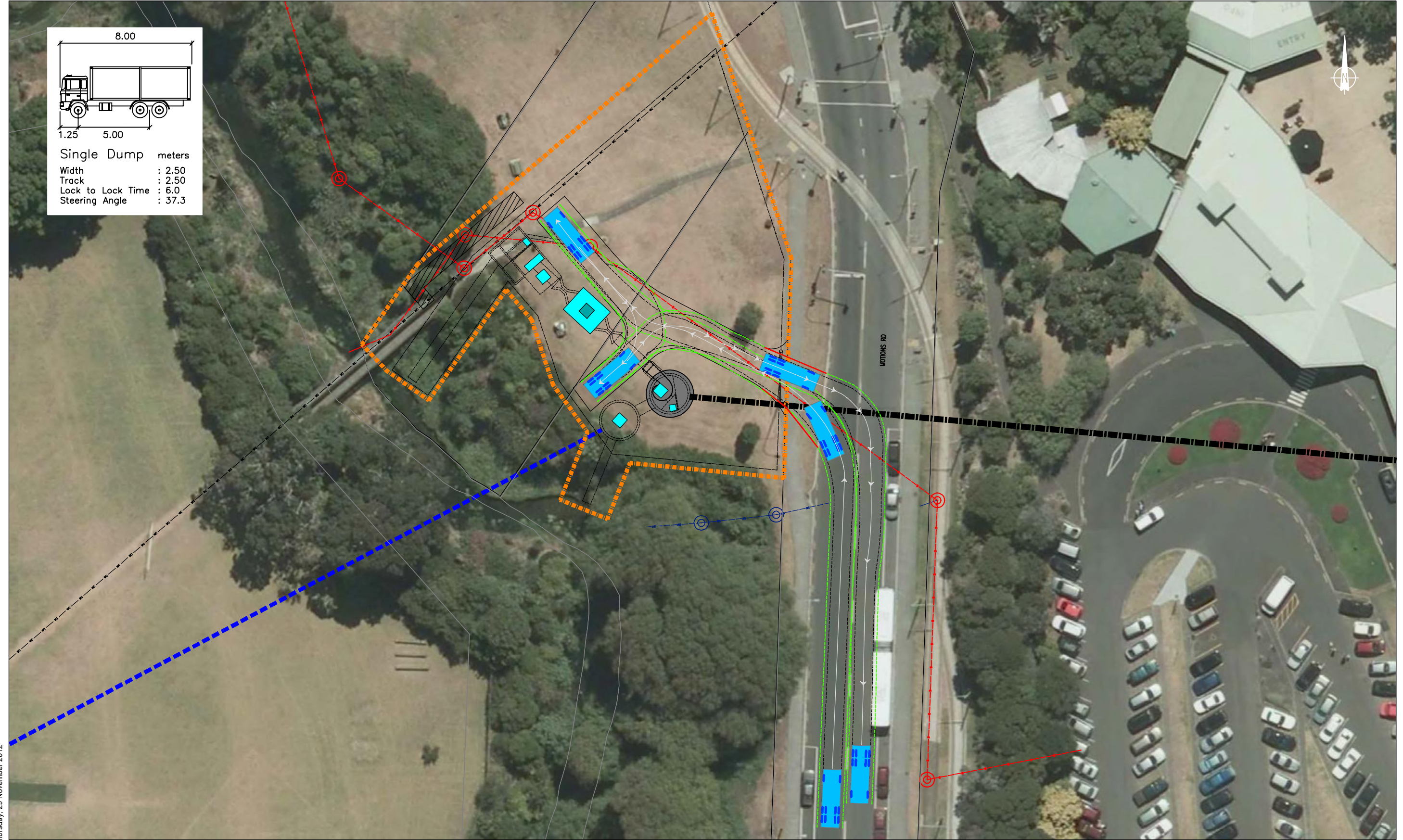


Note: Site layout indicative only. Final layout dependant on Construction Management Plan



Note: Site layout indicative only. Final layout dependant on Site Reinstatement Plan

Unallocated Page



Thursday, 29 November 2012

REVISION	DATE	DESCRIPTION
—	05.06.2012	Sourced from Watercare - AEE-MAIN-11.2.dwg
—	—	—
—	—	—
—	—	—
—	—	—
—	—	—

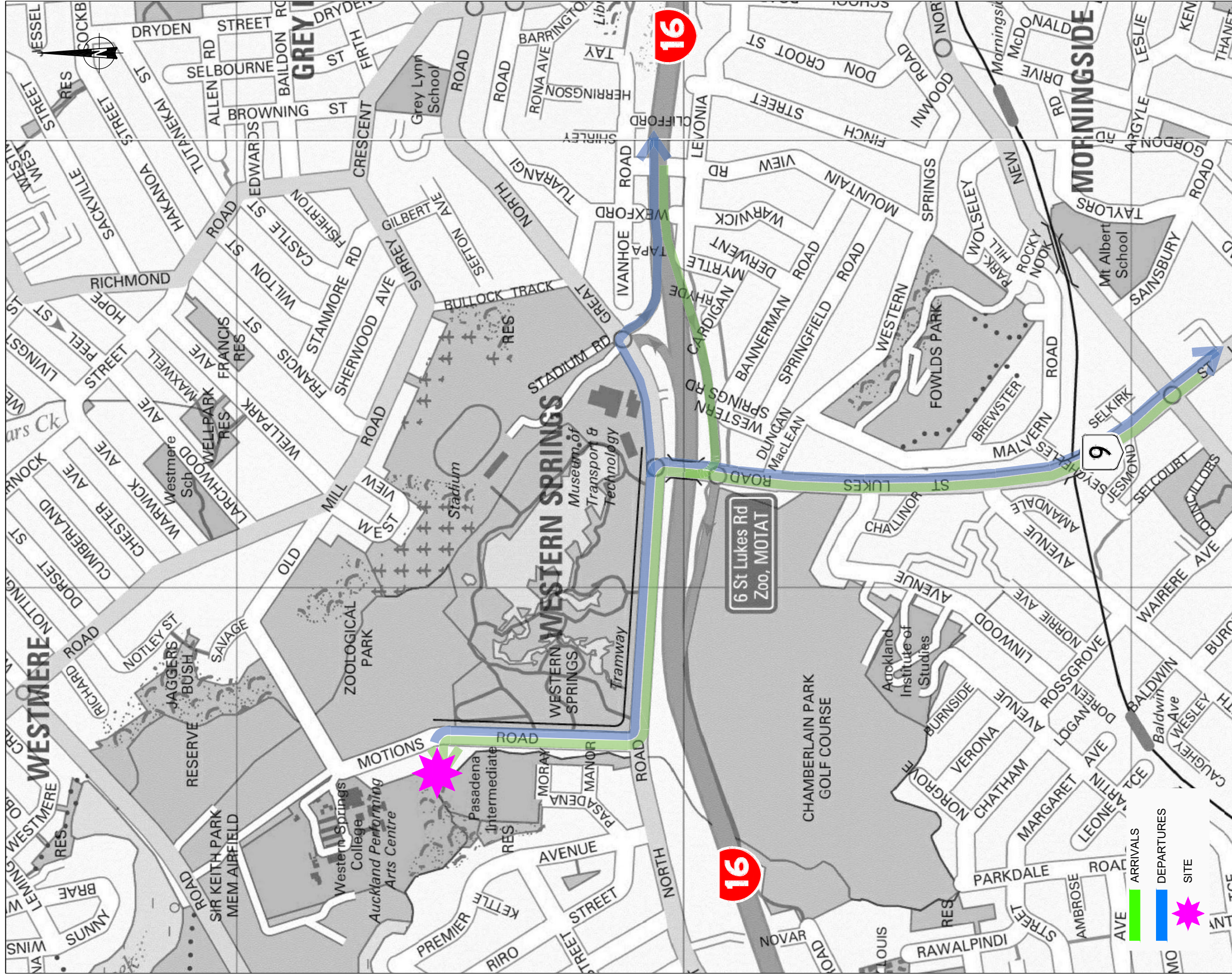
Watercare Central Interceptor
Motions Road (L1S1) - Truck Tracking



DRAWN: SP
 DATE: 05.12.2012
 SCALE: 1:500@A3
 DWG NO:11117A53A



20.v2



Tuesday, 24 July 2012

Watercare - Motions Road (L1S1)

Truck Routes

Traffic Design Group



21

SCALE: N.T.S